

AcquiData Update

October 2008

IN THIS ISSUE

1. Announcing Testream/CS version 8.0!

...completely new
Product Specifications
Entry & Maintenance
program

..... expanded
ReportWriter features

..... improved efficiencies
in the Interface
Application program

2. Testream/CS Training Class Schedule

AcquiData, Inc.
Suite 101
1219 Route 171
Woodstock, CT 06281
Phone & Fax: (860) 910 – 4747
www.acquidata.com

Testream®/CS

Helping You Get *[Connected]*

**NOW available! Testream®/CS
version 8.0**

AcquiData, Inc is pleased to announce the release of the latest version of *Testream/CS*, rev. 8.0. This new system update is available at no charge to customers covered by a Support Services agreement. It contains many new system features as well as internal improvements and corrections. This issue of the 'AcquiData Update' will present some of the exciting new enhancements coming your way in rev 8.0. A complete description of all of the changes included in this new release is provided in the 'Read Me First' document accompanying the update.

The system requirements for Testream/CS rev 8.0 are....

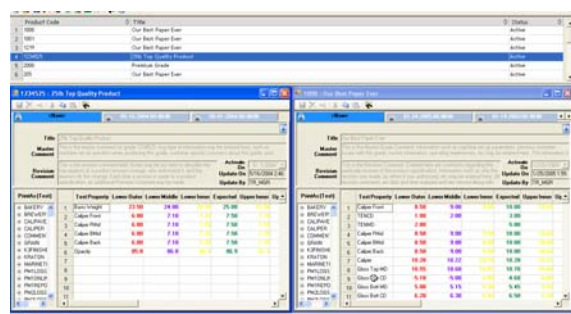
- Microsoft Windows 2000 (SP4) or Windows 2003
- Microsoft SQLServer 2000 or 2005
- Microsoft Internet Explorer 6.0 with SP1 or version 7.0

For more details on hardware/software requirements please contact our Help Desk and ask to receive a copy of the latest version of the "Testream/CS PC Configuration Guide".

To schedule your system's move up to 8.0 please call our Help Desk at (860) 910-4747 ext 101.

READ ON!!!!

[Back to top](#)

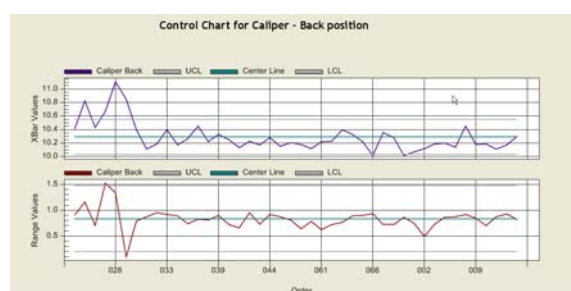


TOTALLY NEW Product Specifications Entry & Maintenance program...

Completely rewritten, this new version of the 'QC Limits' program continues to provide Testream/CS customers with a genealogy-based program for the entry and maintenance of product quality specifications...but with **significant** feature improvements and additions. These include....

- Product specifications may now be linked to more than just a single, unique product code. Now, different specifications for the same product code may be entered by associating the product code with different 'work units' (i.e. producing machines) and/or with a different sample ID set. For example product XYZ may have one set of quality parameters if it is produced on machine #1 and a different set of quality parameters if it is made on machine #2.
- When working with the new program, a user may have multiple sets of product specifications displayed concurrently, making it easy to visually jump from one set of specs to another. Also, 'cut/copy/paste' features have been enhanced to further simplify and speed up specifications entry and maintenance.
- Totally new Product Specifications reports are now available from within the Product Specifications Entry & Maintenance program. No longer do you have to exit the program and bring up the Data Extractor in order to produce print reports of your product specs.
- If you were to define an upper limit quality specification of 7.50, does that mean that 7.50 is the last 'good' reading and therefore any reading higher than that, say 7.51, would be out of spec, or do you mean that 7.50 is the first bad reading? In this new program, you can have out of specification alarms to go into action in *either* way!

[Back to top](#)

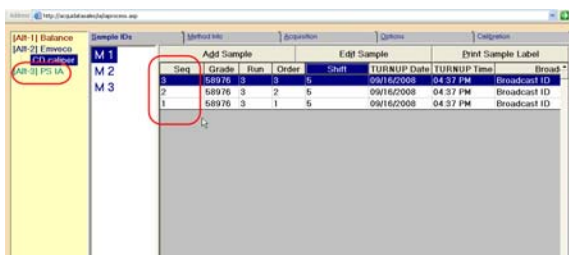


Expanded functionality in ReportWriter....

ReportWriter is continuing to grow!! Many new chart styles have been added (box and whiskers, X bar and R control charts, histograms, cpks, just to name a few!) as well as the following....

- A new icon has been added to left side panel: 'External Data'. By clicking on this object and dragging it to the desired location in your report, ReportWriter will go out to an external data source – another database for example – and read the 'view' of that data source in order to bring into a ReportWriter report the data elements you wish to include. In this way data that lies outside of the Testream/CS database may still be included in a ReportWriter report: sales and shipping information, for example, held in a sales order entry system can now be brought into a quality report to make Certificate of analysis report generation simple and straightforward.
- ReportWriter has always provided users with the capability to include quality data from different sample ID sets (raw material quality results, wet end test data, finished product test results, etc) in one report. Now, these sample ID sets may be logically linked so that you can make a search statement based on one sample ID set, and still be able to include test results from the other(s), even if you don't know the other sample IDs. For example, you may know that there is approximately a 45 minute time lapse between the test results you get from your pulp lab until dry lab results are acquired by Testream/CS. You can produce a ReportWriter report based only on the dry lab sample IDs (reel number, batch number, etc) but have ReportWriter go query the linked pulp quality results so as to include them in the final report.

[Back to top](#)



Interface Application (IA) program enhancements...

The IA is getting bigger! With the release of version 8.0 IAs can now accommodate 10 methods each, instead of the previous limit of 5. Double the capacity! Also....

A completely new type of IA program is now available with Teststream/CS release 8.0. Called the 'Product Specification IA', or PS/IA, this new IA builds its own data acquisition screen based on the test properties for which quality limits have been defined in a particular product code. For example, when a tester selects sample of Product 'XYZ' and begins to test, this new IA looks up the specifications set for that product code and builds a data acquisition screen that includes all of the test properties included in that spec. While only able to accept keyboard entered data at present, the PS/IA is still a tremendous timesaver: no longer do you have to build multiple IA method screens to accommodate the different manual data collection required by different products. Now, one PS/IA can do it all, dynamically!

Another timesaver is also included in rev 8.0: the ability to batch enter sample IDs. At the Sample ID selection screen you may now select multiple samples, indicate the order in which you intend to test them, then go over to the IA and begin. The IA will take you through multiple data acquisition screens, one for each of the batched samples. You will, of course, continue to see the sample IDs to which the test results will be linked in the database at the top of the IA screen for constant visual confirmation. No longer do you have to test one sample at a time.

[Back to top](#)



Training

Our next Teststream/CS training class will be:
November 6 & 7, 2008
La Quinta Inn, Garden City, N.Y.

For information on joining this class please
email Sally Keil at skeil@acquidata.com

[Back to top](#)